

**Imperial College
London**

**Your future
self is waiting
for you**



**Keep up to
date with
news and
events**

WORLD TOP 10 UNIVERSITY



6th
in World
2024



6th
in UK
2024

theguardian

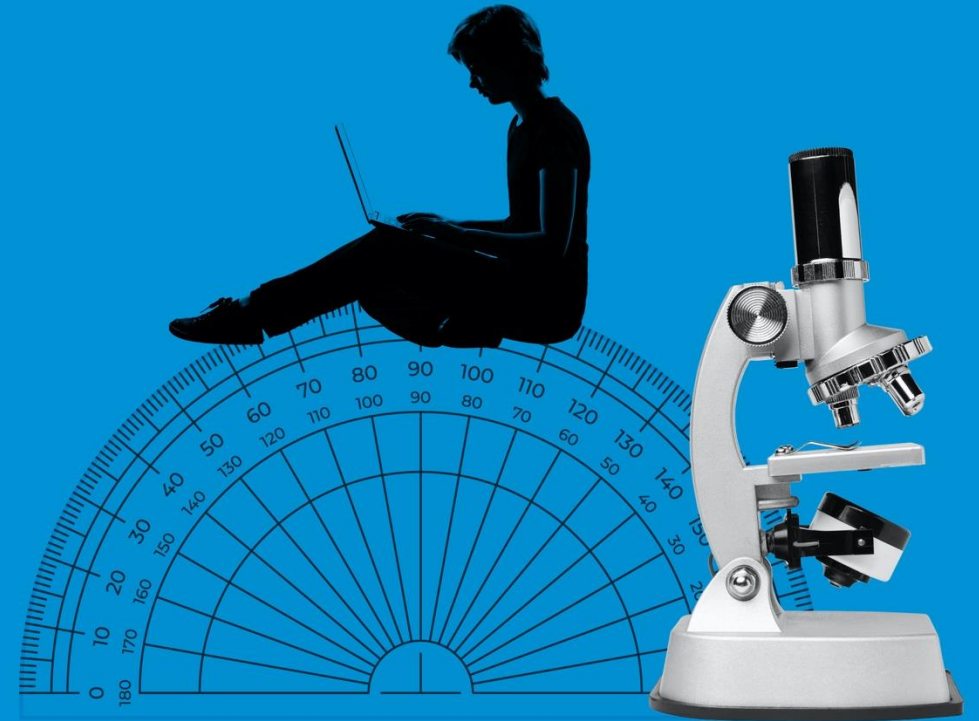
5th
in UK
2024



3rd **8th**
in Europe in World
2024 2024



5th
in UK
2024





OUR COMMUNITY

Only UK university to focus entirely on **science, engineering, medicine and business.**

Student numbers (2022/23)

- **23,029** full and part-time students
- **11,961** undergraduates
- **11,068** postgraduates

Courses

- **200+** taught postgraduate courses
- **7.3:1** applications to admissions ratio (2022/23)

GLOBAL IMPERIAL



World's Most International University rankings 2024

- 5th in the world

Top 10 non-UK group (2022/23)

- | | |
|------------|-----------------|
| • China | • India |
| • France | • Germany |
| • Italy | • United States |
| • Malaysia | • Hong Kong |
| • Spain | • Singapore |



**61% students at Imperial come
from non-UK countries.**

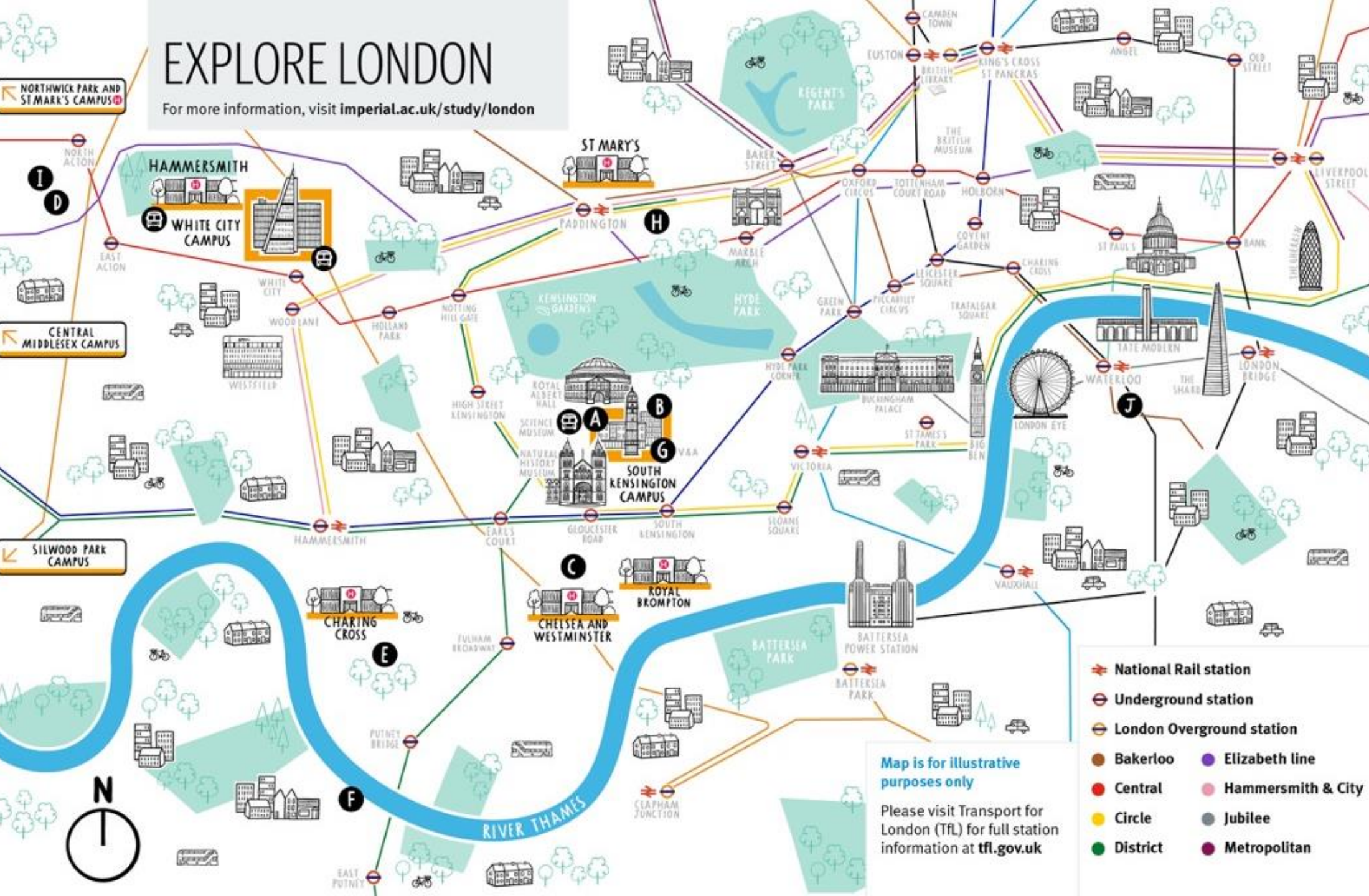
OUR LOCATION

- Main campus based in South Kensington
- Additional campuses based in White City and Silwood Park (postgraduate)
- Six hospital campuses
- High level of employer engagement
- Many professional societies in London
- All students graduate in the Royal Albert Hall
- London is no.1 in QS Best Student Cities rankings 2024



EXPLORE LONDON

For more information, visit imperial.ac.uk/study/london



Map Key

- Imperial Campus
- Imperial Hall of Residence
- H Hospital and Campus
- S Campus shuttle

Imperial Halls of Residence

- A Beit Hall
- B Eastside Halls
- C Evelyn Gardens*
- D Kemp Porter Buildings
- E Parsons House*
- F Putney Boathouse**
- G Southside Halls
- H Wilson House
- I Woodward Buildings
- J Xenia

Halls portfolio is subject to change
 * Continuing students only
 ** Invitation only

- ➔ National Rail station
- ⊖ Underground station
- ⊖ London Overground station
- Bakerloo
- Elizabeth line
- Central
- Hammersmith & City
- Circle
- Jubilee
- District
- Metropolitan
- Northern
- Piccadilly
- Victoria
- Waterloo & City

Map is for illustrative purposes only

Please visit Transport for London (TfL) for full station information at tfl.gov.uk

FACULTY OF **ENGINEERING**

- Aeronautical Engineering
- Bioengineering
- Chemical Engineering
- Civil and Environmental Engineering
- Computing

FACULTY OF **ENGINEERING**

- Dyson School of Design Engineering
- Earth Science and Engineering
- Electrical and Electronic Engineering
- Materials
- Mechanical Engineering

FACULTY OF **NATURAL SCIENCES**

- Centre for Environmental Policy
- Chemistry
- Life Sciences
- Mathematics
- Physics

FACULTY OF **MEDICINE**

- Brain Sciences
- Immunology and Inflammation
- Infectious Disease
- Institute of Clinical Sciences
- Metabolism, Digestion and Reproduction
- National Heart and Lung Institute
- School of Public Health
- Surgery and Cancer

IMPERIAL COLLEGE

BUSINESS SCHOOL

- Finance
- Innovation and Entrepreneurship
- Economics and Public Policy
- Marketing
- Analytics and Operations

INTERDISCIPLINARY ENVIRONMENT



Global Challenge Institutes

- Data Science Institute
- Energy Futures Lab
- Institute of Global Health Innovation
- Grantham Institute (*climate change and the environment*)
- Institute for Security Science and Technology
- Institute for Molecular Science and Engineering
- Institute of Infection

Bringing together expertise to tackle the **world's biggest problems.**

PROFESSIONAL SKILLS DEVELOPMENT



Graduate School offers an award-winning professional skills development programme

- Tailored courses and workshops for Master's and Research students
- Annual events to facilitate cross-departmental networking
- Year-round programme of research seminars

Career development programme for PhD students

Graduate teaching assistant training programme

Departmental teaching opportunities

GLOBAL ALUMNI NETWORK

Alumni

- Over 210,000 alumni
- Regional alumni groups worldwide
- Regular updates and events on Imperial, alumni, research etc.
- Alumni visitor centre
- Volunteering opportunities
- Lifelong programme of CPD, webinars etc.

Plexus – Intuitive online platform for alumni, connecting you directly with Imperial and each other.



GREAT Scholarship

We are offering 1 GREAT scholarship of **£15,000 towards tuition fees** for a Greek student pursuing one-year postgraduate study at Imperial

All eligible applicants holding a valid Greek passport will be invited to apply if they receive an offer to study at Imperial by **13 March 2024**

To be considered for a GREAT – Imperial College London Scholarship you must:

- be a citizen of **Greece**
- have been classified as Overseas for fee status
- apply for a one-year full-time Master's course
- have received an **offer** of admission to study for a one-year full-time Master's Course from the **Faculty of Engineering, Faculty of Medicine, Faculty of Natural Sciences, Business School or Science Communication Unit** by **Wednesday, 13 March 2024**
- be available to commence your academic studies in the UK by the start of the UK academic year in September/October 2024

More information: www.imperial.ac.uk/study/fees-and-funding/postgraduate-taught/grants-scholarships/international-scholarship-collaborations/great---imperial-college-london-scholarship/



Sign up for

EMAIL UPDATES

Scan the QR code to
receive regular updates
about Imperial.

